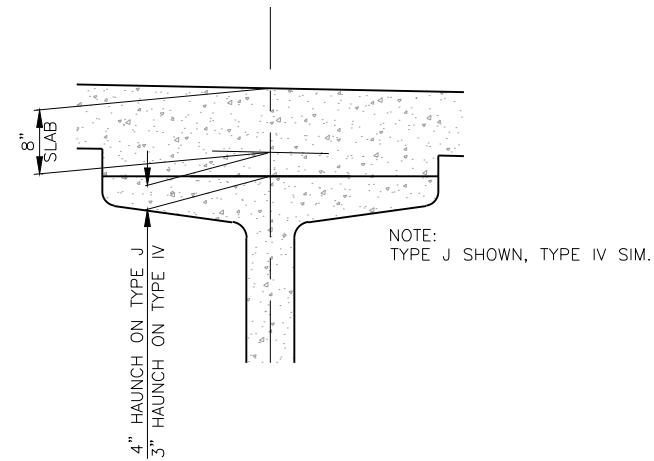
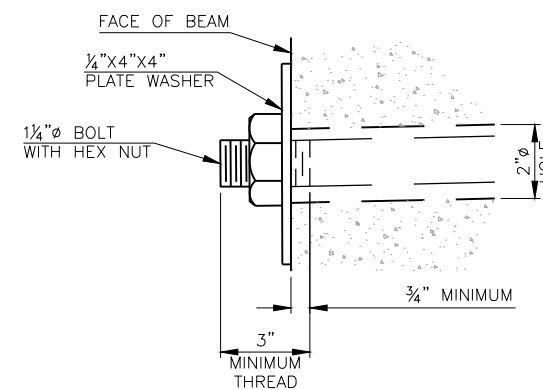


DESCRIPTION	REVISIONS	DATE

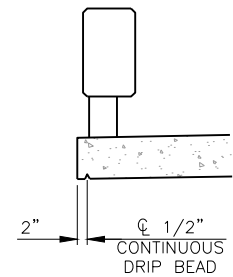


BEAM HAUNCH DETAIL

NOTE:
 PLAN QUANTITIES FOR CLASS AA CONCRETE INCLUDE 35.9 CY FOR BEAM HAUNCHES IN PHASE I AND 35.9 CY FOR BEAM HAUNCHES IN PHASE II. THE HAUNCH HEIGHT SHOWN IS THE THEORETICAL HAUNCH HEIGHT AT THE CENTERLINE BEARING ONLY, MEASURED FROM THE BOTTOM OF THE DECK SLAB TO THE TOP OF THE BEAM, AND VARIES ACROSS THE SPAN. DETERMINE THE ACTUAL HAUNCH HEIGHT (ACCOUNTING FOR BEAM CAMBER, DEAD LOAD DEFLECTION AND ROADWAY GRADE) AFTER ERECTION OF THE BEAMS AND SUBMIT TO THE ENGINEER FOR APPROVAL. THE ENGINEER WILL NOT MEASURE DIFFERENCES BETWEEN THE THEORETICAL AND THE ACTUAL HAUNCH HEIGHTS FOR PAYMENT.



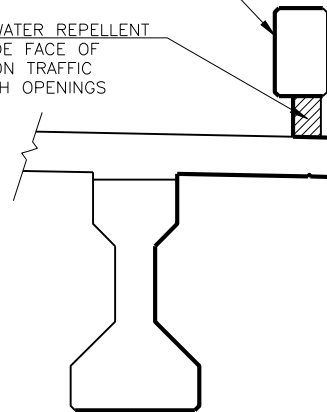
DETAIL A



DETAIL B

TREAT SURFACES INDICATED BY HEAVY LINE WITH WATER REPELLENT

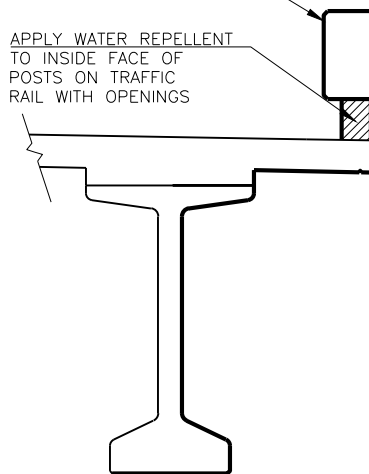
APPLY WATER REPELLENT TO INSIDE FACE OF POSTS ON TRAFFIC RAIL WITH OPENINGS



TRAFFIC RAIL, SLAB, AND BEAM

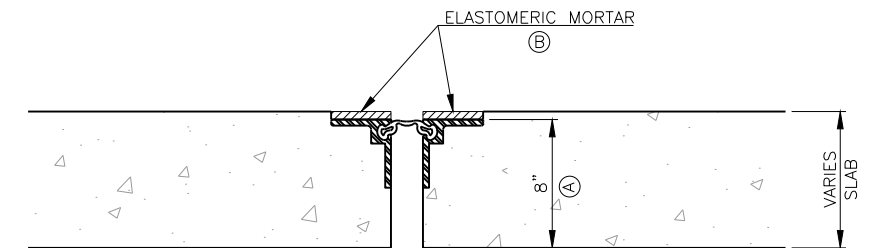
TREAT SURFACES INDICATED BY HEAVY LINE WITH WATER REPELLENT

APPLY WATER REPELLENT TO INSIDE FACE OF POSTS ON TRAFFIC RAIL WITH OPENINGS



TRAFFIC RAIL, SLAB AND BEAM

WATER REPELLENT TREATMENT DETAILS



EXPANSION JOINT PLACEMENT DETAIL

- (A) SET EXPANSION JOINT DEVICES AT AN ELEVATION CORRESPONDING TO AN 8" DECK SLAB.
- (B) PLACE ELASTOMERIC MORTAR OVER STEEL RECEPTORS TO MATCH BRIDGE DRIVING SURFACE AFTER ALL GRINDING HAS BEEN COMPLETED. INCLUDE ALL COSTS FOR PLACING THE ELASTOMERIC MORTAR, INCLUDING MATERIAL, LABOR, EQUIPMENT AND INCIDENTALS REQUIRED TO COMPLETE THE WORK IN THE CONTRACT UNIT PRICE FOR "CLASS AA CONCRETE".

DESIGN	B.J.K.	SH-48 OVER CIMARRON RIVER	CREEK COUNTY
DRAWN	B.M.S.	TYPICAL CROSS SECTION DETAILS	
CHECKED	M.R.S.		
APPROV.	B.J.K.		
SQUAD	CEC		
		JOB PIECE NO. 27925(04)	SHEET NO. 48